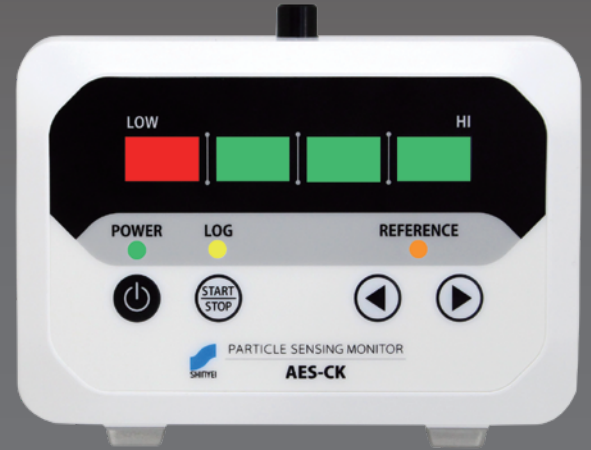


# Particle Sensing Monitor AES-CKM

High-end Model for Fine Particle Monitoring

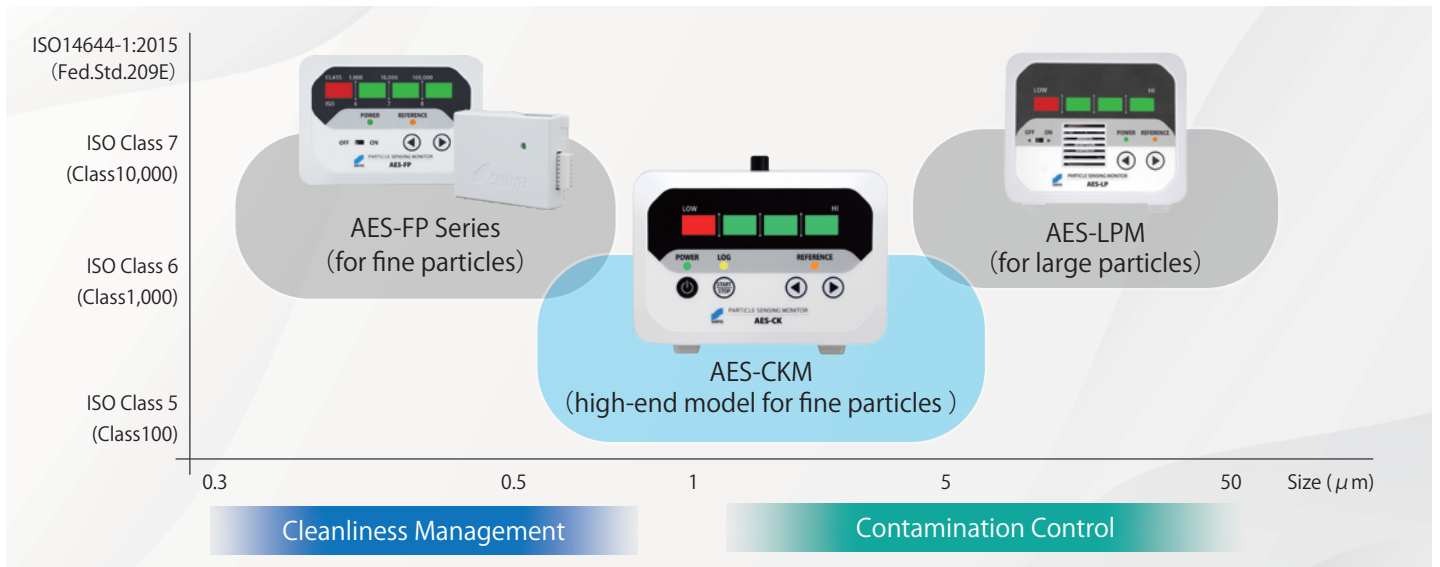


AES-CKM  
135 × 105 × 69.1 (mm)

High-end model **for more accurate measurements** in a clean environment with ISO Class 6 (Class 1,000).

- ◎ Capable to detect fine particles(over 0.5 $\mu$ m) and large particles(over 5 $\mu$ m) simultaneously.
- ◎ Easy-to-check 4 step LED display for cleanliness level.
- ◎ Logging function is embedded.
- ◎ 5 different outputs or communication interfaces.
- ◎ Continuous monitoring and quick notification of abnormalities.
- ◎ Temperature and humidity sensor available as an option.

■ AES-CKM is for continuous monitoring of ISO Class 6 (Class 1,000) areas more accurately.



## ■ Specification

(\*1) Calibration point is only at 0.5µm range.

|                             |  |
|-----------------------------|--|
| Model                       | AES-CKM  |
| Detectable Particle Size *1 | Over 0.5µm/ Over 5µm   |
| Optical Source              | Laser Diode  |
| Measurement Range           | ISO14644-1:2015 Class6-7<br>(Fed.Std.Class1,000 to Class10,000)                      |
| Unit                        | pcs/m3(Default), pcs/cf, pcs/L(*2)   |
| Output/Interface            | Alarm, Ethernet, Analog(1-5V), Wi-Fi, RS485  |
| Measurement Time            | 60s  |
| Data Update Time            | 1s   |
| Memory Capacity             | 128kB (Equivalent to 3.5 days)   |
| Power                       | +24V(Power terminal block)/+300mA(Max)<br>+5V(Power supply Type-C conector)/+1A(Max) |
| Power Consumption (max)     | 1.5A Max(7.5W Max)   |
| Operating Temperature       | 0 to 40°C  |
| Storage Temperature         | -20 to 60°C  |
| Operating Humidity          | 30 to 80%rh  |
| Storage Humidity            | Below 90%rh (No condensation)  |
| Weight                      | Approx. 510g   |
| Applicable Wire Size        | AWG26 to 20  |

## ■ Calibration Service (Optional)

Annual calibration of sensor unit is recommended.  
For details, please contact retailer or us directly.

### Issued Documents:

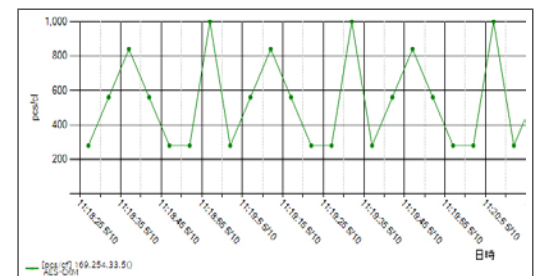
- Calibration Certificate
- Inspection Report
- Traceability System Diagram

## ■ Temperature and Humidity Sensor (Optional)

Connect optional sensor (RHU-LB151-11A-AES) to Particle Sensing Monitor for continuous monitoring of temperature and relative humidity.



## ■ Monitoring Software(Optional)



PC application software dedicated to AES series. Functions such as graph display, map display, and e-mail notification can be used.

## ■ Gateway (Optional)

Import data sent from particle sensing monitor without Dedicated PC.

